

Driver Installation: Bizhub C550i

Windows 10



**BRIDGEPORT**<sup>®</sup>  
**OFFICE SOLUTIONS**



---

# DRIVER INSTALLATION

---

Bizhub C224e

Windows 10

MARCH 23, 2021

BRIDGEPORT OFFICE SOLUTIONS  
43 Speers Road, Winnipeg Manitoba R2J 1M2  
204-953-0540 | [bpadmin@bpos.ca](mailto:bpadmin@bpos.ca)

This document will cover the following steps:

- [Downloading and installing the print driver](#)
  - [Download the print driver](#)
  - [Install the print driver](#)
  - [Configure the default settings of the print driver](#)

**You will need to be on the same network as the printer.** If you are unsure if you are on the same network, please contact your network administrator.

After the driver is installed, you can change the default settings via the control panel.

- [Setting the defaults from the control panel](#)

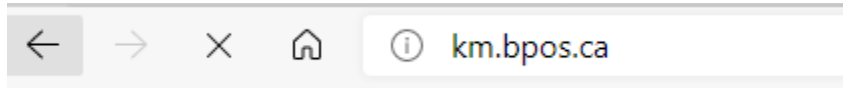
To remove the print driver, simply uninstall it from add/remove programs.

- [Remove print driver from your computer](#)

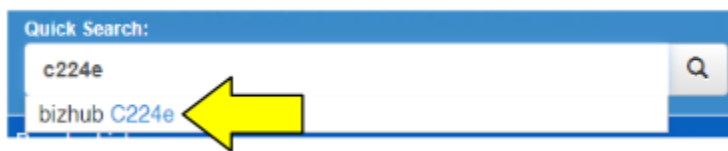
## Downloading and installing the print driver

Download the print driver

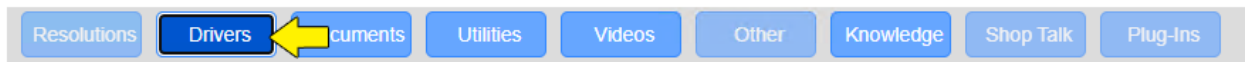
1. Open a web browser (*Edge, Chrome, Firefox, etc*)
2. In the *address bar*, type **km.bpos.ca** and press *enter*



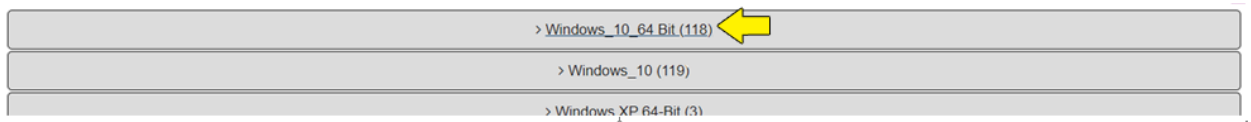
3. In the *Quick Search box* on Konica Minolta's website, enter the model of your machine (c224e) and select it from the dropdown that appears



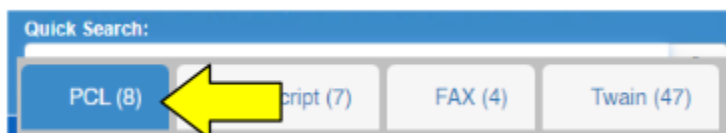
4. Click the **Drivers** tab



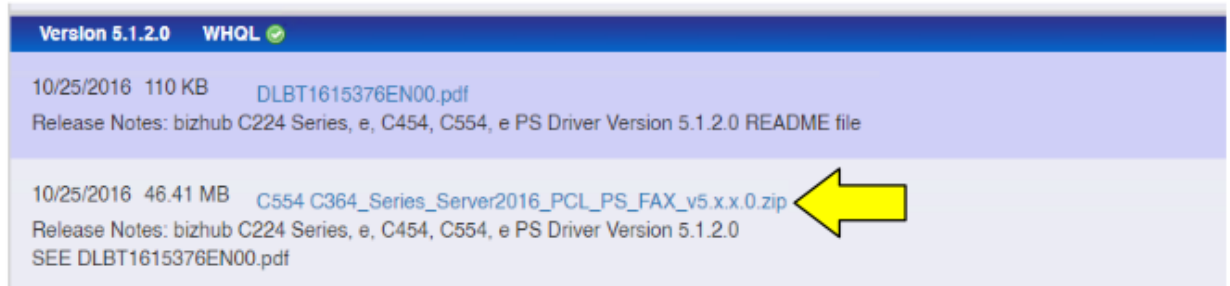
5. In the list of operating systems, click **Windows\_10\_64 Bit**



6. Click the **PCL** tab



7. Select the latest version of the driver. Currently (August 4, 2021):  
Under **Version 5.1.2.0** click **C554 C364\_Series\_Server2016\_PCL\_PS\_FAX\_v5.x.x.0.zip** to download the file

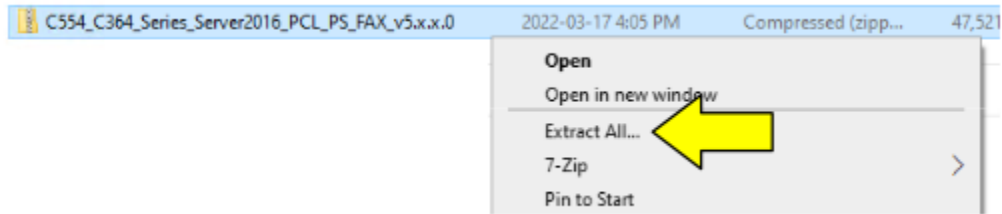


**NOTE: if you have a 4K monitor, download Version 5.3.0.SSD\_12**

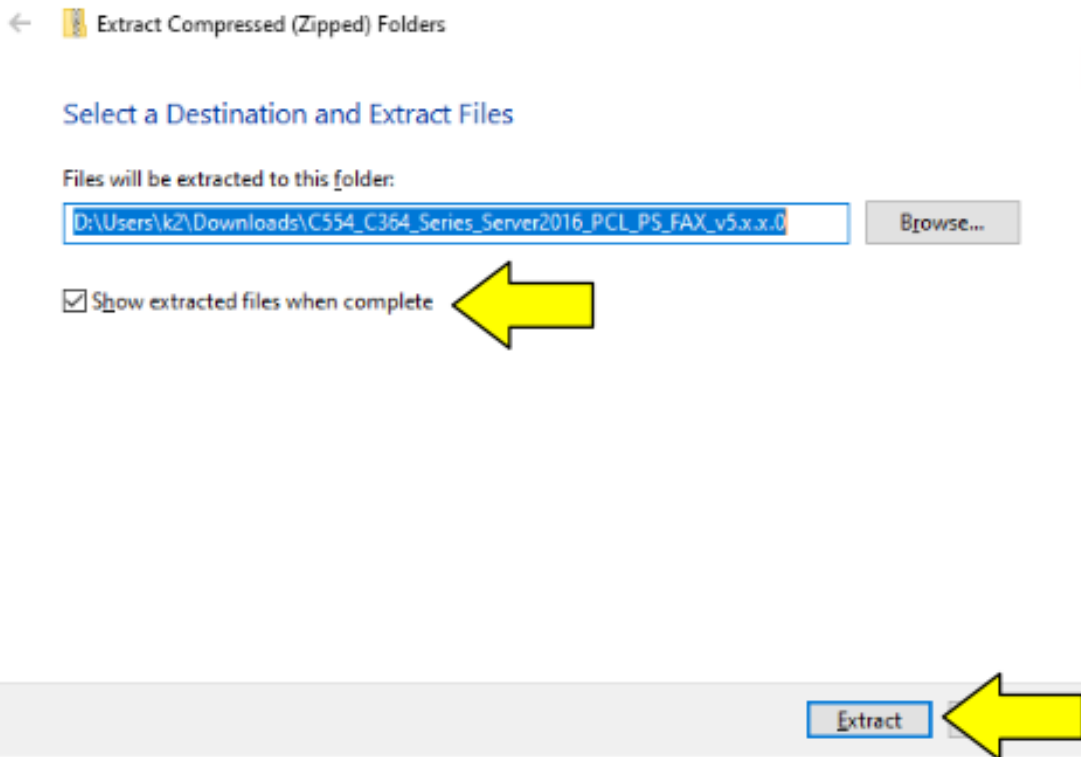
8. Open your **Downloads** folder (or the location you saved the file to)

9. Find the file you just downloaded

10. **Right-Click** the file and select **Extract All**



11. Select a destination to extract the files to and ensure that the *Show extracted files when complete* checkbox is **checked** and then click **Extract**



Install the print driver

12. In the folder that opens (if you did not check *show extracted files when complete*, you will need to locate the extracted folder), double-click the **Driver** folder

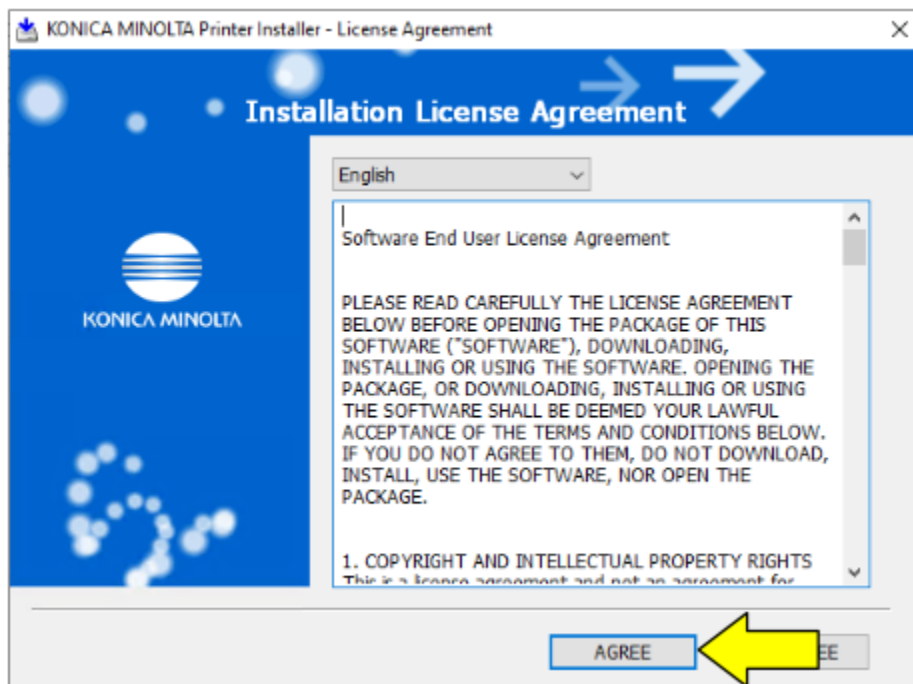


13. Double-click **Setup64** to run the installer

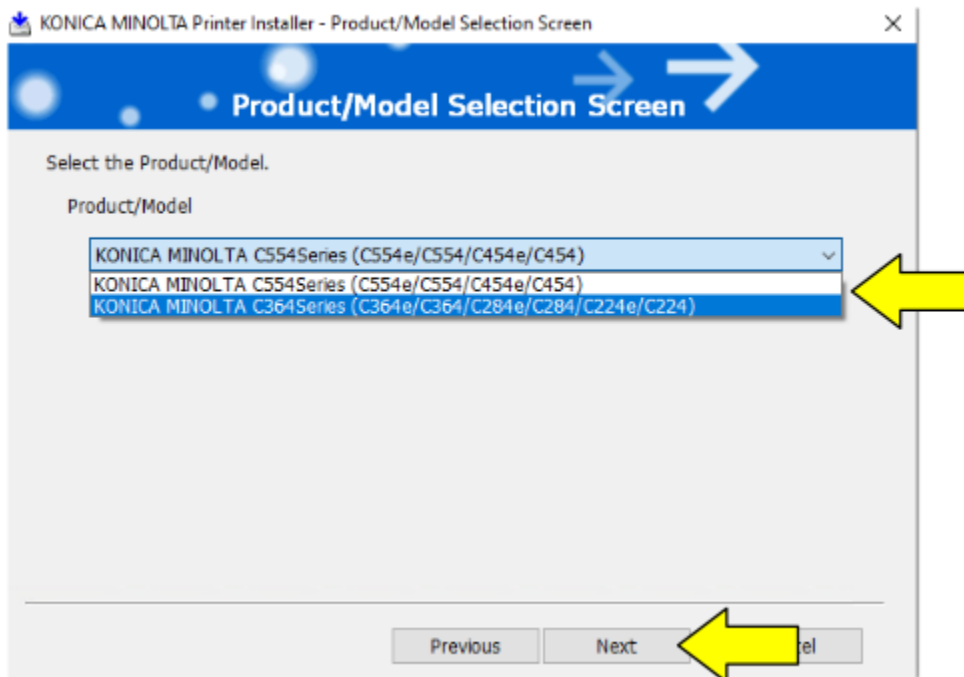
Bmp	2021-08-04 1:52 PM	File folder	
Drivers	2021-08-04 1:53 PM	File folder	
Lang	2021-08-04 1:53 PM	File folder	
Readme	2021-08-04 1:53 PM	File folder	
setupsub	2021-08-04 1:53 PM	File folder	
Setup	2021-08-04 1:52 PM	Application	1,011 KB
Setup	2021-08-04 1:52 PM	Configuration sett...	2 KB
Setup64	2021-08-04 1:52 PM	Application	1,404 KB

**\*\*NOTE\*\*** If you receive an error, please double-click **Setup** to run the application for a non-64Bit environment.

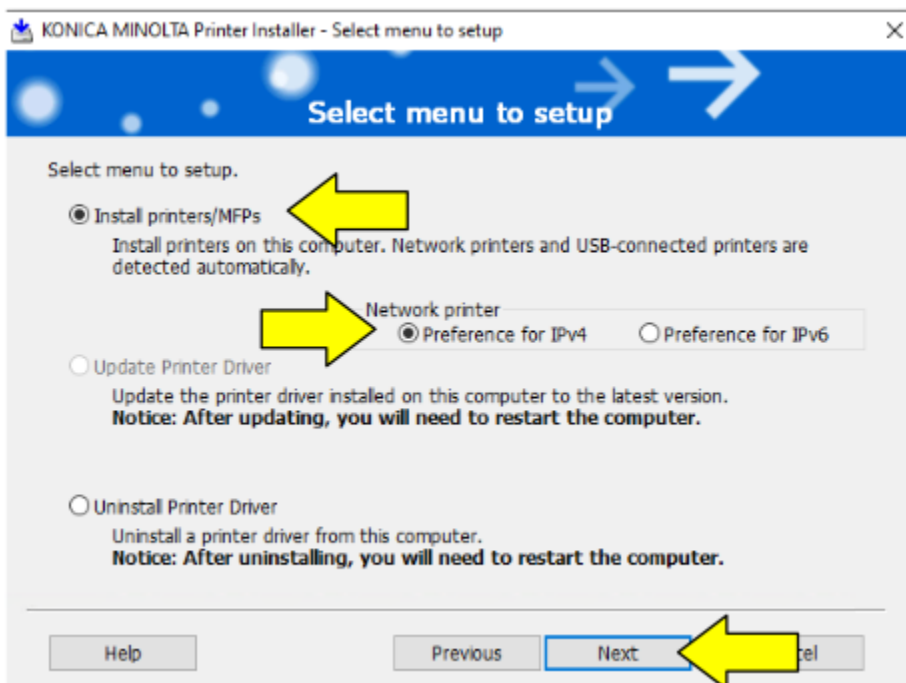
14. Read the *Software End User License Agreement*, and then click **Agree** if you agree to the agreement, or click *Cancel* to cancel the setup



15. Select the proper model from the dropdown and then click **Next**

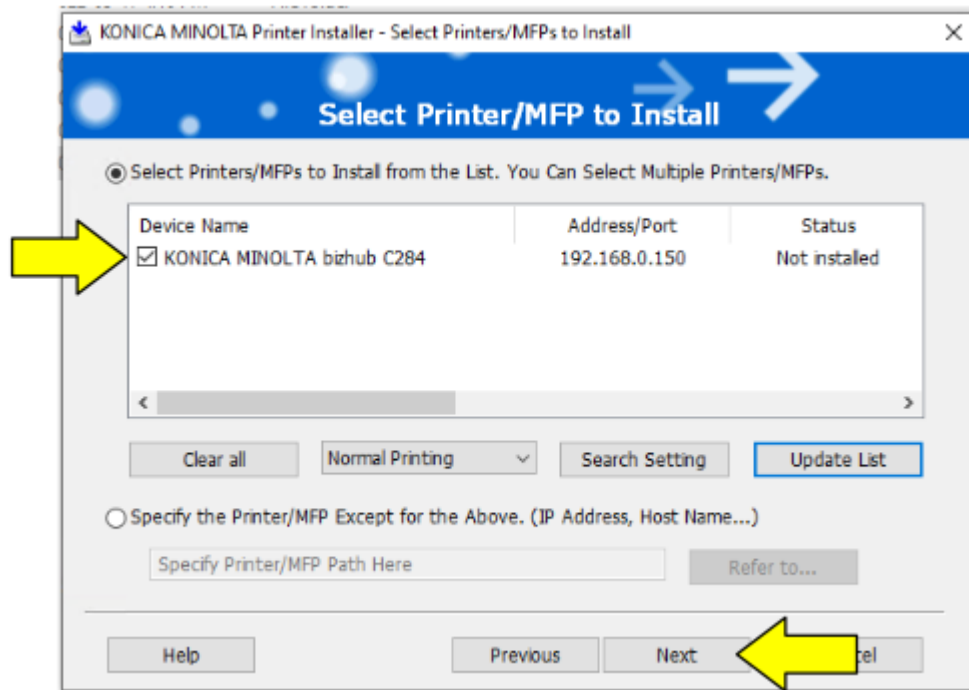


16. Select **Install printers/MFPs, Preference for IPv4** and click **Next**

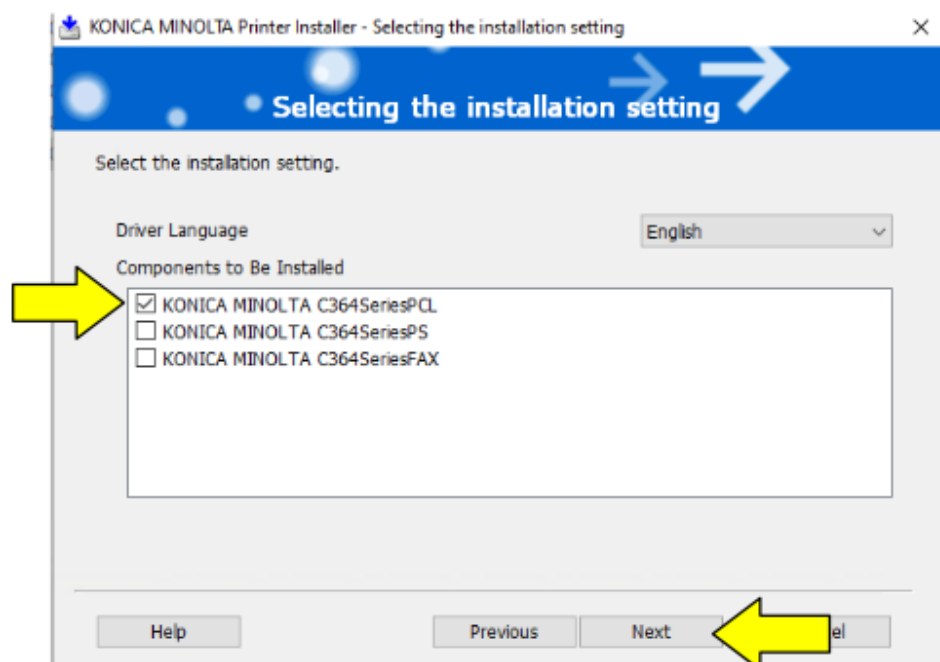


17. The software will search for the printer on the network. If the printer cannot be found, ensure you downloaded the proper driver and that you are on the same network as the copier. Please contact your network administrator if you require assistance.

Select **“Select Printers/MFPs to Install from the list”** and click **Next** (If there are more than one and you are unsure which to select, contact your network administrator)

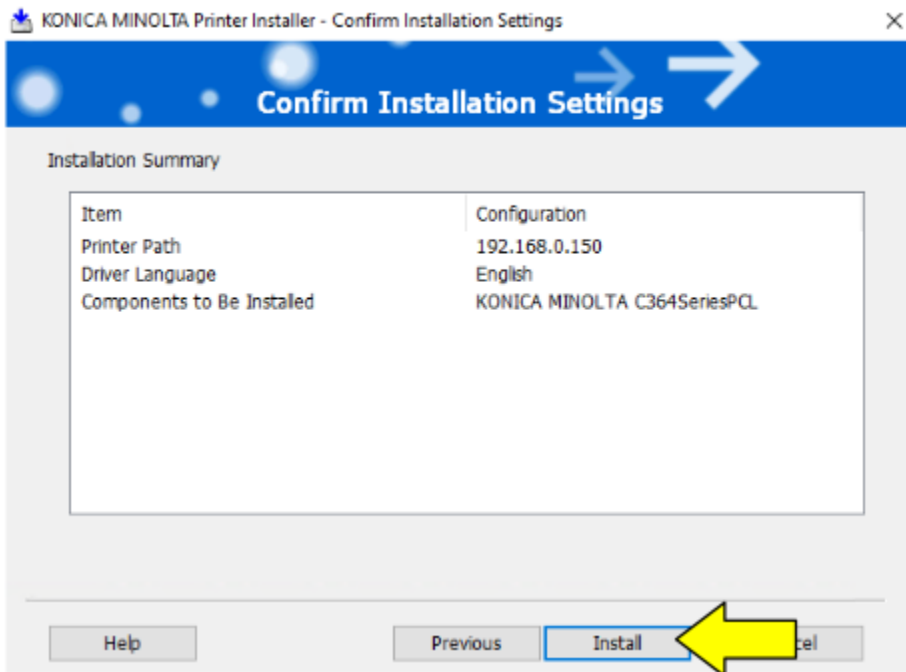


**18.**Select the drivers you wish to install (we recommend PCL) and then click **Next**

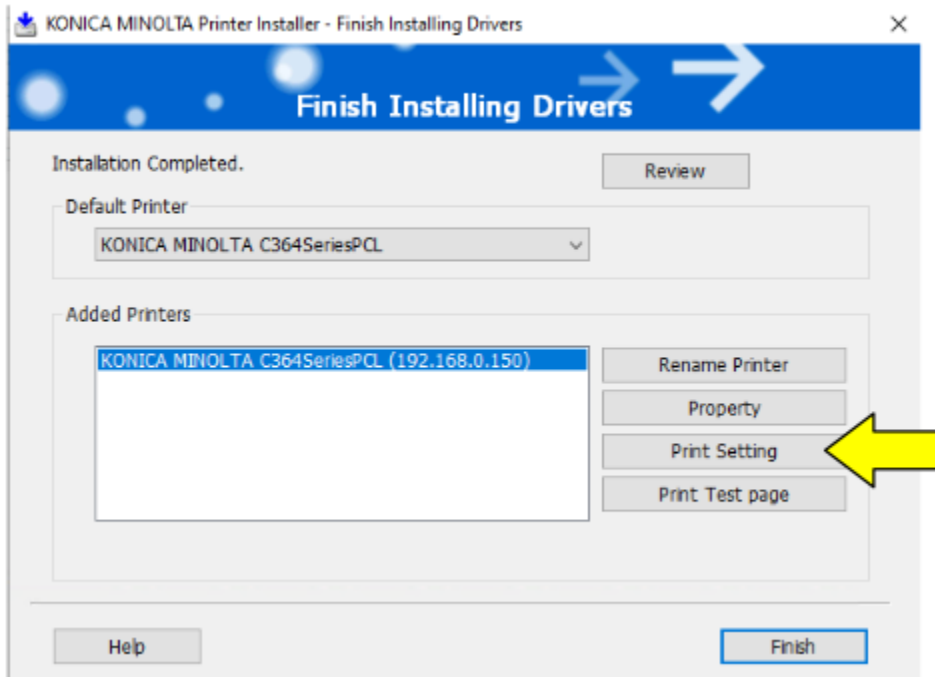


Configure Default Settings

19. Click **Install**

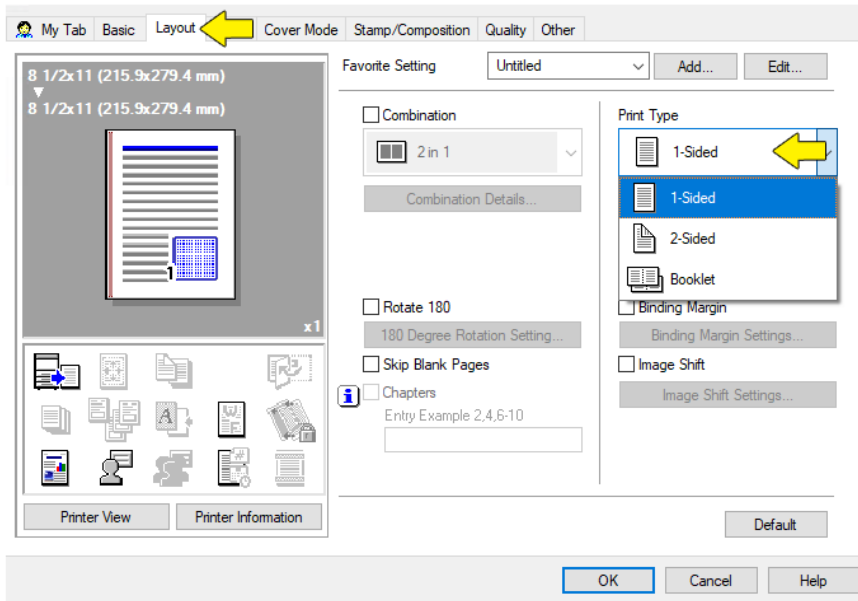


20. Most people would like the default settings to be *single sided* as well as the colour set to *Gray Scale*. To do this, click **Print Settings**

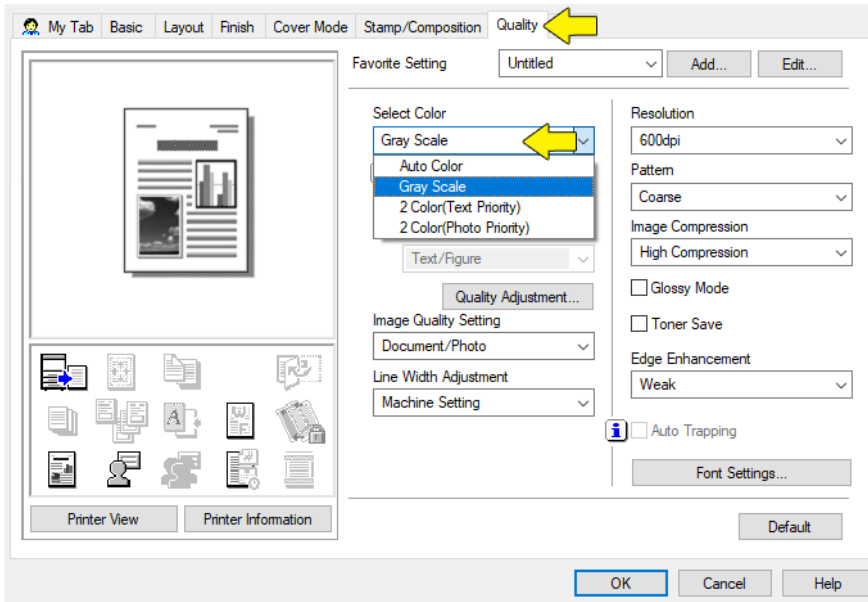




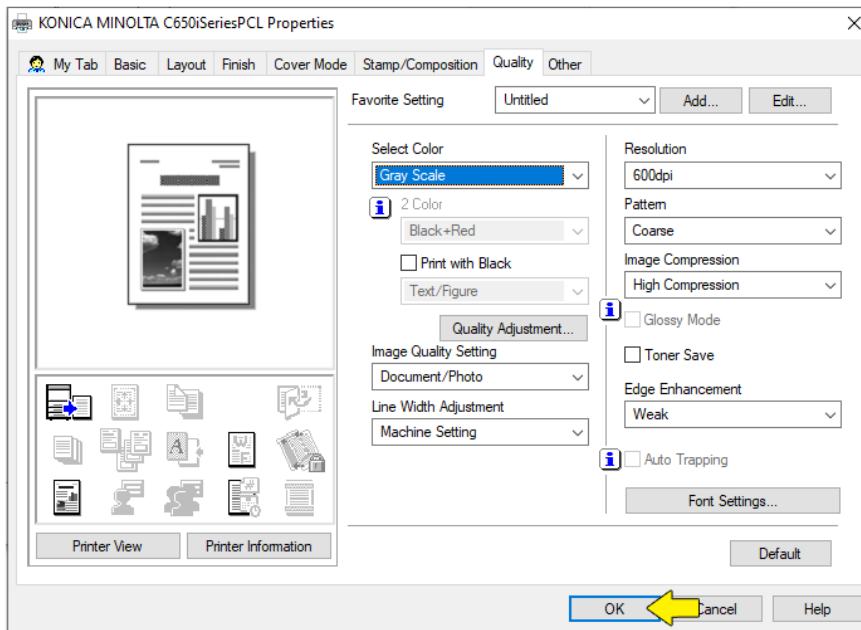
21. Click the **Layout** tab and change the *Print Type* to **1-Sided**



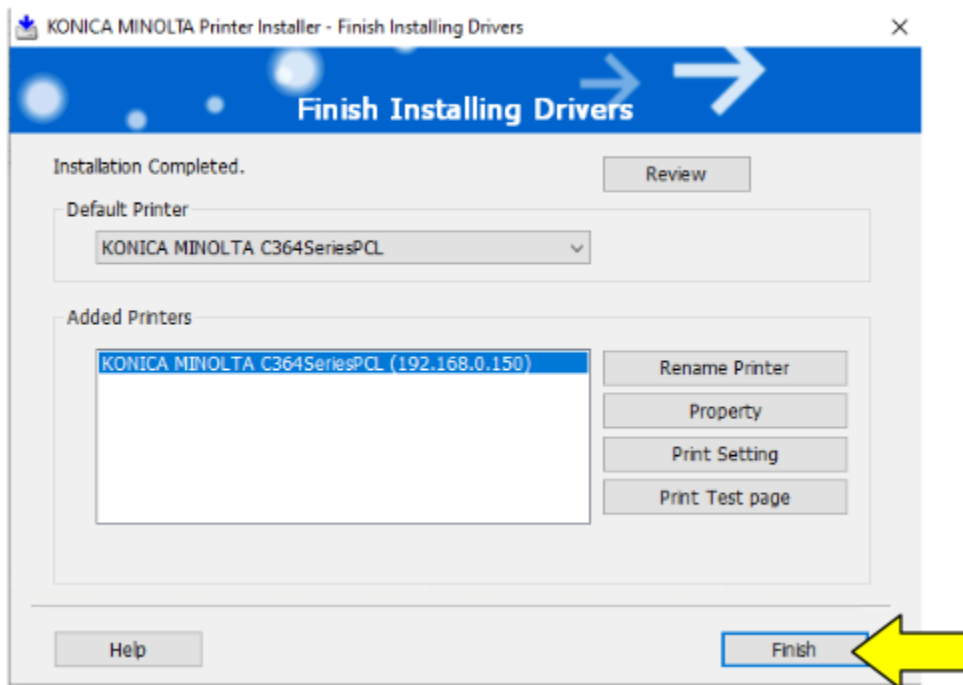
22. Select the **Quality** tab and change *Select Color* to **Gray Scale**



23. Click **OK**



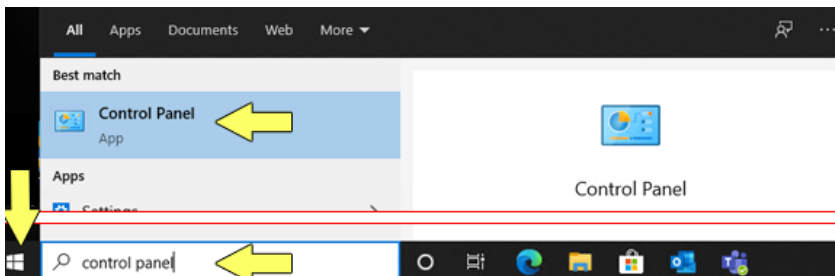
24. Click **Finish**



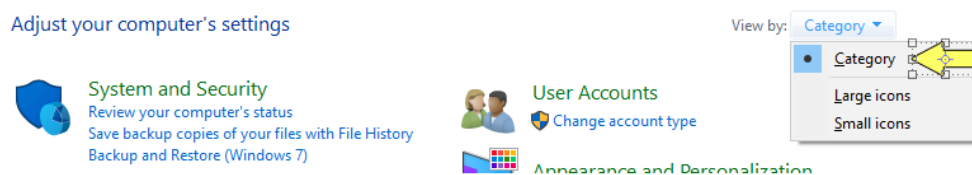
25. Your printer is ready to use

### Setting defaults from the control panel

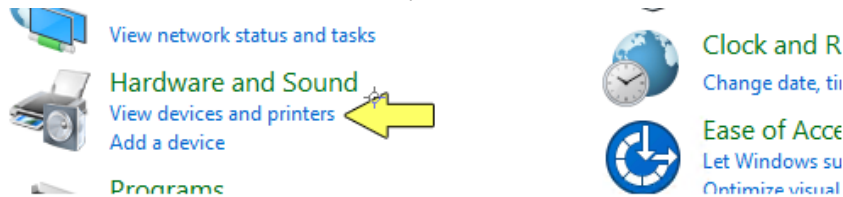
1. Click **Start** and in the search box, type **Control Panel**
2. In the search results, click **Control Panel**



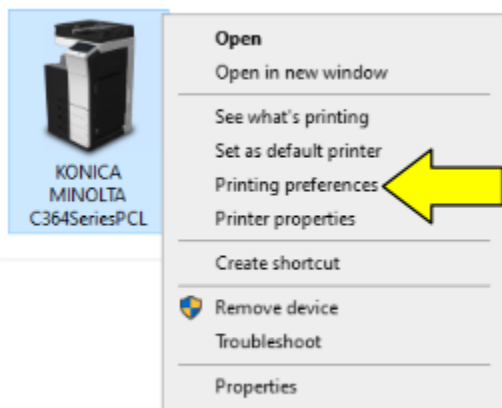
3. Beside **View By**, select **Category**



4. Under **Hardware and sound**, click **View Devices and Printers**

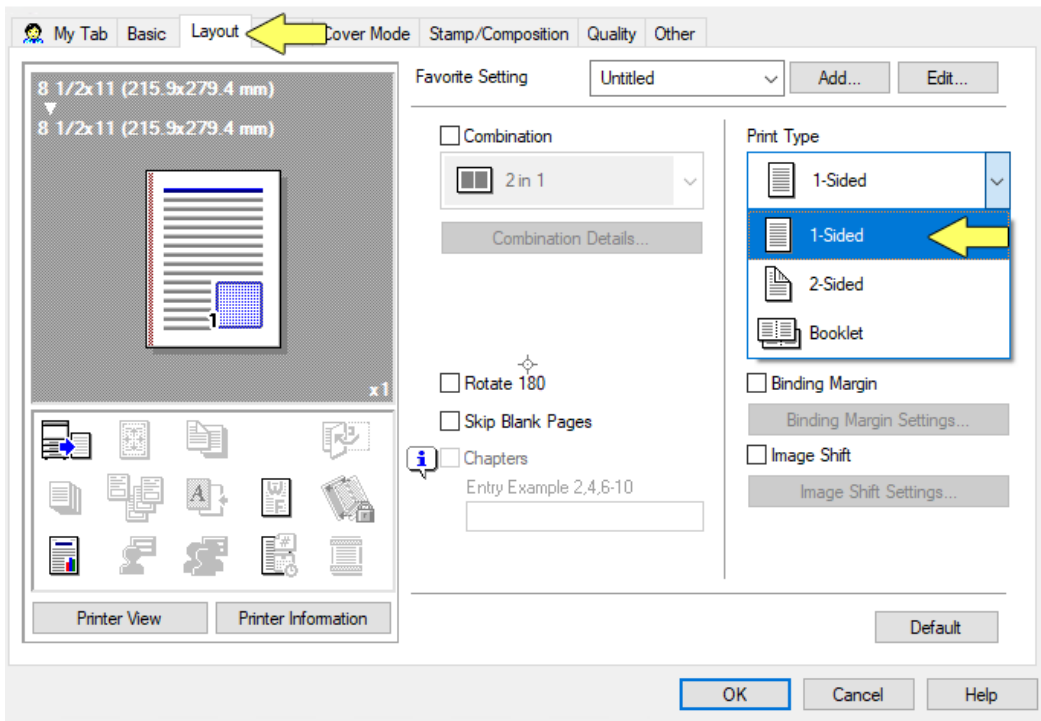


5. Right-click the printer and select **Printing Preferences**

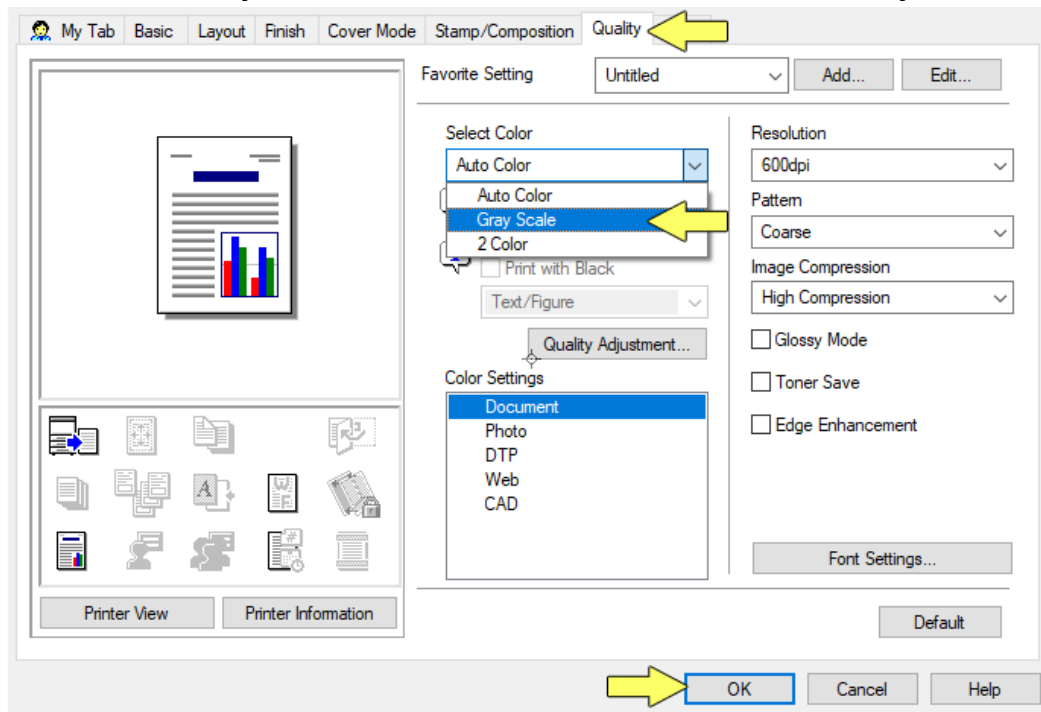


6. Anything configured in this window will be the printer's default.

7. Click the **Layout** tab, then click **Print Type** and select **1-Sided**



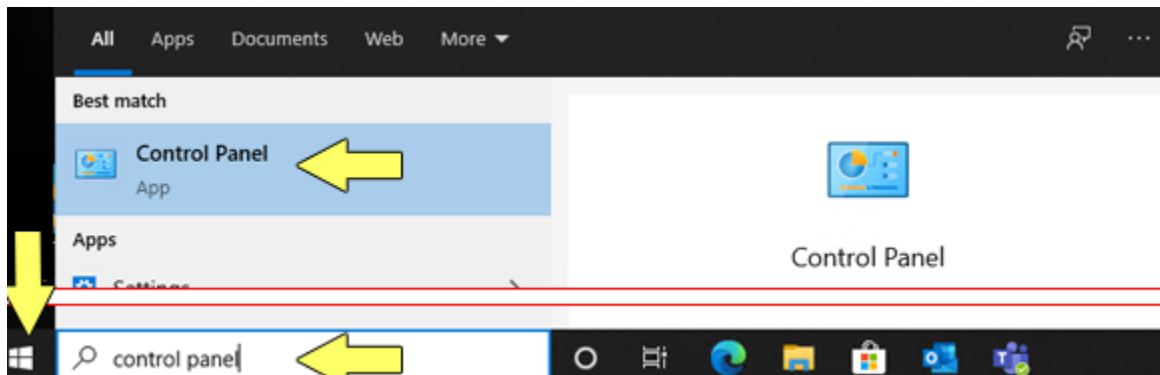
8. Click the **Quality** tab, then click **Select Color** and select **Gray Scale**. Click **OK**



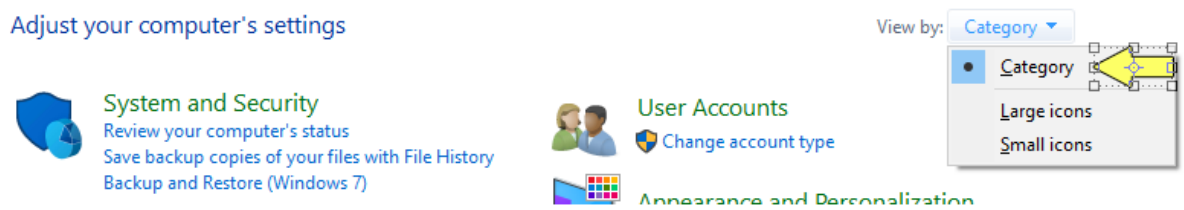
The printer is now defaulted to single sided gray scale printing.

Remove the print driver

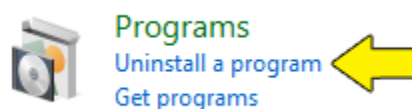
1. Click **Start** and in the search box, type **Control Panel**
2. In the search results, click **Control Panel**



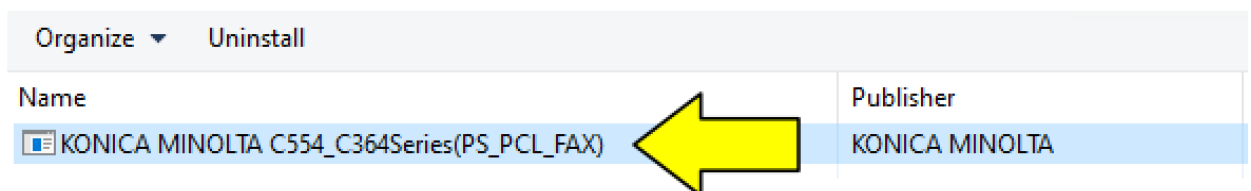
3. Beside **View By**, select **Category**



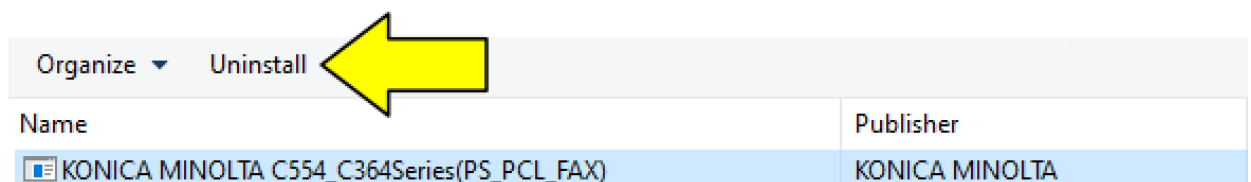
4. Under **Programs**, click **Uninstall a Program**



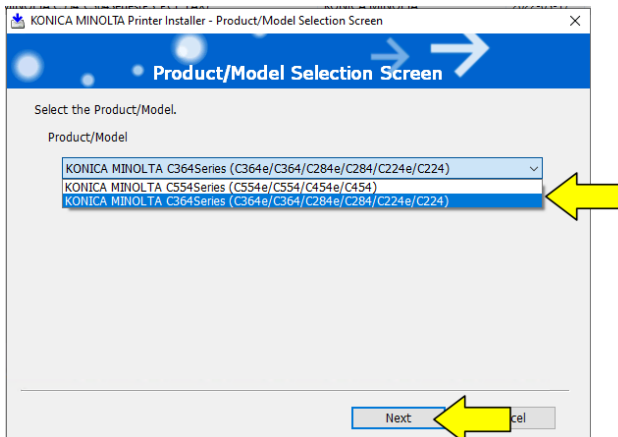
5. In the list of programs, find **KONICA MINOLTA C554\_C364Series(PS\_PCL\_FAX)** and select it



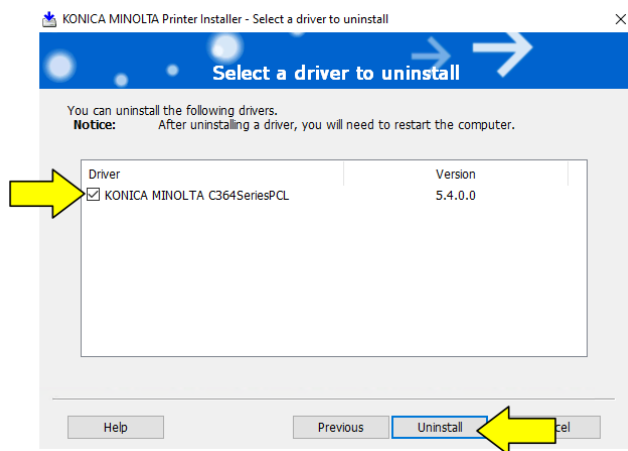
6. Click **Uninstall**



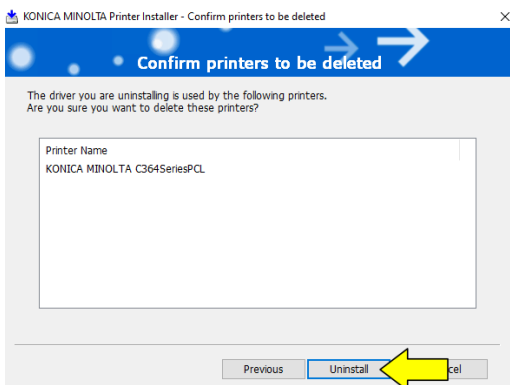
7. Select the printer in the dropdown list and click **Next**



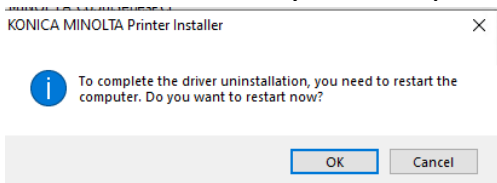
8. Select the printer to uninstall and click **Uninstall**



9. Click **Uninstall**



10. Click **OK** to restart your computer or **Cancel** to restart later



11. The printer has been removed